



# CLIFF HOUSE HOTEL

SEASIDE LUXURY IN A TRADITIONAL IRISH FISHING VILLAGE

# OUR HISTORY

## ABOUT THE HOTEL

The Cliff House Hotel is a five-star, privately owned **luxury hotel** located close to Cork and Waterford on the southern **coastline of Ireland**. The building seems to cling to the cliff on the south side of Ardmore Bay where there has long been a fishing village, and a Christian settlement that pre-dates St. Patrick. From **sun-drenched terraces** and private balconies it is possible to see Ardmore's sands, lobster pots and dolphins that play out on the water. All our **luxury rooms** and suites are sea facing while many are interconnected to provide family-friendly configurations. Uniquely our 'House' Restaurant holds a **Michelin Star**, the Well Spa is award-winning and we are proud members of **Relais and Châteaux**.

The hotel has been in existence since the **Thirties**, but was completely rebuilt and opened in its current incarnation in 2008. The hotel holds an unrivalled reputation for precision, **old-world service** delivered with **characterful Irish warmth**.





# ROOMS

## IRISH SOUL, BOTH INSIDE AND OUT

Each of the 39 sea view rooms and suites at our luxury hotel command stirring views of peaceful Ardmore Bay near Waterford. The rugged textures and natural hues of this dramatic cliffside location are always present. Over six levels set into the cliff the rooms cascade down to the sea so that no view is interrupted, the Irish light flooding the warm interiors.

It is this proximity to nature that has inspired the design with a palette of marine blue, fuchsia, aubergine and sea green. Our six different room types also hold historic furnishings, our hotel sequestering the largest private collection of Campaign furniture in Ireland. Additionally every room features an original work by a leading Irish artisan, be it a canvas comprised of polished glass, or a playful homage to the Aran jumper. Each piece works in concert with our modern egg-shaped baths and back-lit headboards to reflect our sense of contemporary Irish style. Family friendly configurations are also available.





# RESTAURANT

LOCAL IRISH PRODUCE SERVED WITH A MICHELIN STAR

Our award winning, Michelin star restaurant at The Cliff House Hotel attracts foodies from all over the world to this seaside village in West Waterford. A lack of pretence underpins all our menus and we source the maximum possible amount of produce grown on Irish land and fished from Irish seas. An exploratory, confident style of cooking results in explosively interesting dishes combining modern, progressive and straightforward Irish cuisine.



The fine dining experience is open for dinner and comprises both a tasting menu as well as à la carte options enjoyed in our ocean-facing, glass-walled dining room with a sea-coloured carpet, silvery velvet banquettes and plush tweed chairs. The adjacent Chef's Table Room features a fire and a dramatic, 20ft-long American oak table and is available for private group use.



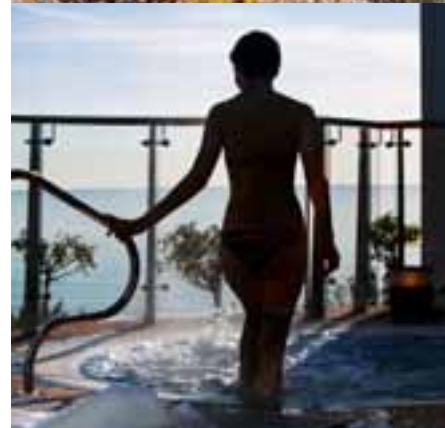
# THE SPA

## AN INTIMATE SPA ON THE WATER'S EDGE

At our luxury spa, The Well, we offer a range of natural therapies that reflect our seaside location. Whether you opt for a seaweed facial or a specialist outdoor bath using Irish peat, the healing power of the ocean and Ireland's natural assets lie at the heart of the experience. The Well is set in to the rock face, with our relaxation and couples' treatment rooms facing the sea to make use of the calming horizon.

We have chosen to work with products that reflect our values: combining essential oils, trace elements and marine ingredients. Some treatments are designed exclusively for men. Most treatments are available in your bedroom.

As our spa is inspired by the great outdoors, we offer a whole range of activities, some of which are suitable for our younger guests - and almost all of which are available in and around Ardmore itself. Boating, yoga, archery, sea & river kayaking, climbing, abseiling, snorkelling, surfing, hiking, golfing, horse riding, nature walks and foraging trips and many more are available through the hotel.





# BAR

## A SEAFRONT BAR WITH NAUTICAL DESIGN NOTES

In our relaxed bar restaurant, you will find a bar menu that is at once sophisticated and easygoing and a tribute to the very best Irish cuisine. The interior is dominated by a curved walnut bar reminiscent of a tall sailing ship. In winter, a fire burns to create the intimate, cosy feel of a traditional Irish pub. In summer, the stone terrace hops with diners making the most of our dramatic cliffside perch. The menus offer a wide selection of sandwiches, seafood dishes, including monkfish, Helvick cod, local crab and chowder. Rib-eye steaks are meltingly soft, while the desserts are classic Irish comfort food taken to the next level.

During the summer months, an outdoor grill is offered with fresh fish, meats and salads on the terrace.



# A MEETING VENUE

WHERE RELAXATION COMES EASILY

The Cliff House Hotel is regarded as one of the best venues in Ireland for a corporate meeting or event. Our hotel has a strong history of high profile yet discreet gatherings, including weddings and team-building events. Our two Pavilion meeting rooms are elegant in their simplicity. Situated at the quiet north end of the hotel, with their own garden and viewing area, these event venues have capacities for up to 60 persons theatre style each with up to ten possible breakout spaces. The entire property is also available to take on an exclusive use basis.

For dining our House Restaurant overlooks Ardmore Bay and can accommodate up to 60 persons. The Private Dining Suite located next door (the two can be interconnected) can cater for 40 people for a fully seated lunch or dinner. The Cliff Bar and Terrace offers more casual options for your group.

Team-building options are plentiful – on site we offer an award-winning spa and adventures such as kayaking, surfing, rock climbing and abseiling, archery, raft building, treasure island adventures and orienteering. In the local area clay pigeon shooting, foraging trips, the historic Ardmore Cliff walk, cookery schools, castle tours, charter boat trips and many more attractions are available.



# OUR SISTER DESTINATION

THE CLIFF TOWNHOUSE, ST.STEPHEN'S GREEN, DUBLIN



CLIFF  
TOWNHOUSE



The Cliff Townhouse  
22 St. Stephen's Green, Dublin 2, Ireland  
T: +353 (0)1 638 3939 F: +353 (0)1 638 3900  
e: [info@theclifftownhouse.com](mailto:info@theclifftownhouse.com)  
[www.theclifftownhouse.com](http://www.theclifftownhouse.com)  
[facebook.com/theclifftownhouse](https://facebook.com/theclifftownhouse)  
[twitter.com/CliffTownhouse](https://twitter.com/CliffTownhouse)



CLIFF HOUSE  
HOTEL



The Cliff House Hotel  
Ardmore, Co. Waterford  
T: +353 (0)24 87800  
e: [info@thecliffhousehotel.com](mailto:info@thecliffhousehotel.com)  
[www.thecliffhousehotel.com](http://www.thecliffhousehotel.com)  
[facebook.com/TheCliffHouseHotel](https://facebook.com/TheCliffHouseHotel)  
[twitter.com/CliffHouseHotel](https://twitter.com/CliffHouseHotel)